

Cartridge filter housing F51



The F51 are extremely robust 2-part filter housings made of polypropylene. The housing fits standart filter elements (DOE) open on both sides. In- and outlet are arranged opposite each other in the housing head.

The housing can be operated with up to 8 bar pressure and temperatures up to 50°C.

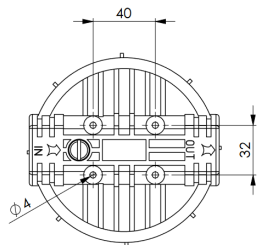
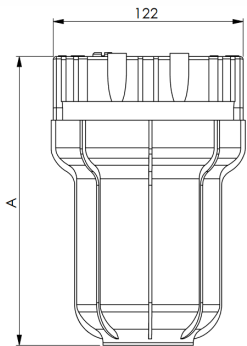
The F51 housing can be used in a wide range of industrial applications due to the very good chemical compatibility.

Applications

- Pre- and fine filtration in the water treatment industry
- Elektronik- and photographic industry
- Surface technology
- Chemical industry
- etc.

Technical data

Material:	Head: polypropylene Lower-part: polypropylene or SAN (transparent)
In-/ Outlet:	1/4" - 1" female thread
Gasket:	NBR, others on demand
Working pressure:	max. 8 bar at 50°C
Working temp.:	min. 5°C max. 50°C
Flow rate:	up to 4 m ³ /h *
Element length:	5", 7", 9 3/4"
*Depending on the connections and the filter element	



Dimensions

Größe	A
5"	170 - 193 mm
7"	225 - 240 mm
9 3/4"	302 - 325 mm
20"	562 - 585 mm

Order information

F5 [] . [] . [] .4 [] - [] - []

Variation	Length	In-/Outlet	Lower-part	Insert	Vent
1 2 part	5 5"	20B 1/2"	40 Polypropylene	none	none
7 3 part *	7 7"	27B 3/4"	60 San transparent	MS Brass	E Vent
	9 9 3/4"	34B 1"			
	20 20"				

*union nut

Order example: F579.27B.460-MS-E